



**Solenoid Valves,
Pressure Operated Valves,
Air Operated Valves**

Cylinders

Proportional Technology

**Analytical and Medical
Technology**

Process Technology

Dust Collector Systems

Custom Solutions

Your Partner in Fluid Automation

**ASCO
numatics™**


EMERSON™
Industrial Automation

Proportional Technology

Continuous control of pressure and flow



SENTRONIC^D

- Pressure control
- Digital control technology
- Programmable via RS232
- Pressure range: 0 to 10 bar
- Connections: G1/8" to G3/8" and subbase-mount version



SENTRONIC^{PLUS}

- Pressure control
- Fast-acting regulation behaviour
- Pressure range: Vacuum to 50 bar
- ATEX Version
- Connections:
 - G1/8" to G1"
 - ISO3
 - various subbase-mount versions



PULSTRONIC II

- Pressure control
- Stable pressure control at continuous flow
- Quick pressure changes
- Pressure range: 0 to 10 bar
- Connection: G1/4"



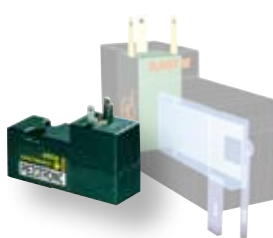
SERVOTRONIC^{DIGITAL}

- Pressure control
- Fast-acting regulation behaviour
- Excellent flow characteristics
- Pressure range: 0 to 40 bar
- Connection: G3/8"



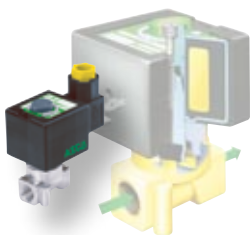
FLOWTRONIC^D

- Flow control
- Digital control technology
- Extremely low sensitivity
- Flow from 10 to 2000 l/min (ANR)
- Connections: G1/4" to G1/2"
- Programmable via RS232



PIEZOTRONIC

- Flow control
- Extremely low power consumption: < 0,07 W
- > 1 billion cycles
- Pressure range: 0 to 8 bar
- Connections:
 - Subbase mount version
 - M5
 - G1/8"



POSIFLOW

- Flow control
- Precise regulation
- Pressure range: Vacuum to 16 bar
- Connections: M5 to G1/2"



PRECIFLOW

- Flow control
- Suitable for extremely low flow rates
- Maximum repeatability
- Pressure range: Vacuum to 10 bar
- Connections:
 - M5
 - G1/8"
 - Subbase mount version



POSITIONER^D

- Flow control
- Digital control unit for angle-seat valves
- Connections: G1/2" to G2 1/2"
- Programmable
- Analog input or frequency signal input for turbine flow sensors



CONTROL^D

- Control of flow / pressure etc.
- Digital control technology
- Programmable
- Analog input or frequency signal input for turbine flow sensors
- Cascade controller



MOTORFLOW^D

- Flow control
- Wear-free flat rotary slide disc made from oxide ceramics
- Low power consumption
- Pressure range: Vacuum to 10 bar
- Connection: G3/4"
- Analog input or frequency signal input for turbine flow sensors



For more information,
please see our catalogue

Proportional Technology

and visit our web site at:

asconumatics.eu

Solenoid and Pressure Operated Valves

for liquid and gas fluids

2/2 and 3/2 solenoid valves, direct operated



- Pressure range: Vacuum to 150 bar
- Function: NC, NO, U
- Connections: M 5 to G 3/4"
- Materials:
 - Body: Brass, stainless steel, plastic, aluminium
 - Seals: NBR, FPM, EPDM, CR, PTFE
- Solenoid voltage:
 - DC (=) 24V
 - AC (~) 24 V, 115 V, 230 V
- Variants:
 - Explosion proof
 - UL
 - CSA

2/2- and 3/2 solenoid valves, pilot operated



- Pressure range: 0 to 350 bar
- Function: NC, NO, U
- Connections: G 1/4" to G 2 1/2"
- Materials:
 - Body: Brass, stainless steel, aluminium
 - Seals: NBR, FPM, EPDM, CR, PTFE
- Solenoid voltage:
 - DC (=) 24V
 - AC (~) 24 V, 115 V, 230 V
- Variants:
 - Explosion proof
 - UL
 - CSA

Valves, pressure-operated



- Pressure range: Vacuum to 40 bar
- Function: NC, NO
- Connections:
 - G 3/8" to G 2 1/2"
 - Flange: DN 15 to DN 150
 - Clamp, butt welding
- Materials:
 - Body: Bronze, cast iron, steel, stainless steel
 - Seals: NBR, PTFE

4/2-, 5/2-, 5/3 solenoid valves, direct or pilot operated



- Pressure range: 0 to 24 bar
- Connections: G 1/4" to G 1"
- Materials:
 - Body: Brass, stainless steel, aluminium
 - Seals: NBR, FPM
- Solenoid voltage:
 - DC (=) 24 V
 - AC (~) 24 V, 115 V, 230 V
- Variants:
 - Explosion proof
 - UL
 - CSA

Special Applications

Valves for:



- Low temperatures down to -196°C
- Combustible oil and gas
- Hot water and steam up to 180°C
- Vacuum
- Fuel dispensing systems



For more information, please see our catalogue

Solenoid and Pressure Operated Valves for Fluid Control

and visit our web site at:

asconumatics.eu

Process Technology

Solenoid pilot valves for valve actuation



3/2 pilot valves, direct acting

- In-line or Namur interface
- Pressure range: 0 to 50 bar
- Function: NC, NO, U
- Connections: 1/4" to 1/2"
- Materials:
 - Body: Aluminium, brass, stainless steel
 - Seals: NBR, FPM, (F)VMQ
- Temperature range: -50 to +90°C
- Power rating: 1.8 to 19 W



3/2 pilot valves, indirect acting

- Pressure range: 2 to 10 bar
- Function: NC, NO, U
- Connections: 1/4" to 1"
- Materials:
 - Body: Aluminium, brass, stainless steel
 - Seals: NBR, FPM, VMQ
- Temperature range: -40 to +80°C
- Power rating: 0.4 to 11.2 W



4/2-, 5/2-, 5/3- pilot valves, indirect acting

- In-line or Namur interface
- Pressure range: 2 to 10 bar
- Connections: 1/4" to 1/2"
- Materials:
 - Body: Aluminium, brass, stainless steel
 - Seals: NBR, FPM, VMQ
- Temperature range: -40 to +80°C
- Power rating: 0.4 to 11.2 W



3/2-, 4/2- pilot valves with manual reset

- Pressure range: 0 to 17 bar
- Function: NC, NO, U
- Connections: 1/4" to 1"
- Materials:
 - Body: Brass, stainless steel
 - Seals: NBR, FPM, (F)VMQ
- Temperature range: -50 to +90°C
- Power rating: 0.4 to 23 W



Explosion-proof solenoid systems

- According to ATEX / IECEx: Ex d, Ex em, Ex m, Ex ia, Ex nA
- International approvals: GOST, INMETRO, KOSHA, NEPSI, NEMA, TIIS, CSA, UL, SAA



Pneumatic valve islands

- Compact design
- High flow
- Use in explosive atmospheres: ATEX zones 1/21 - 2/22
- Space savings of approx. 50%
- Pneumatic connection in the subbase (optional)
- Electrical control via Multipol or fieldbus



Accessories:

- Filter/regulators
- Exhaust protectors
- Cable glands
- Quick-exhaust valves
- Flow regulators



For more information, please see our catalogue

Pilot Valves for the Process Industry

and visit our web sites at:

asconumatics.eu

Dust Collector Systems



Valves for dust collector systems

- Full immersion tank systems
- Pilot boxes
- Remote pulse valves
- Integral pulse valves
- Sequential controllers



For more information please see our catalogue

Pulse Valves for Dust Collector Systems

and visit our web site at:

asconumatics.eu

Custom Solutions



Medical technology

- Argon dosage for argon plasma coagulation



Industrial dishwashers and laundry washing machines

- Wastewater discharge valve

Automobile industry

- Proportional valve for the control of hydrogen supply in fuel-cell powered cars



Automation technology

- Central air supply unit for pick-and-place machines

Commercial vehicle technology

- Emergency manual operation of bus doors



Analytical technology

- Spectral analysis of materials

Medical technology

- Water management in dental treatment units



Laboratory technology

- Adapterblock made of PVDF (high-resistant plastic material used in chemical and biochemical technology) for a quality 3 ultra high purity water production system.

Automobile industry

- Electronic pressure regulators for the control of the application force of the electrodes of welding apparatus



Analytical technology

- Control of the supply of chemicals or aggressive inks. Plexiglas facilitates residue-free discharge.

Commercial vehicle technology

- Complete control module for bus door actuation



Commercial vehicle technology

- Manual switching valves for dump trucks

Automobile industry

- Injection valves for motors powered by natural gas



Handling / Automation

- Vacuum unit for gripping systems

Air Operated Valves and Pneumatic Valve Islands



Lapped spool & sleeve assemblies

- More than 200 million cycles
- Wear-free air bearing
- 1 µm clearance
- Self-cleaning
- Pressure and vacuum within 1 valve
- Short response times
- Optionally direct solenoid actuated



Pneumatic valve islands

- Steel spool for maximum service life
- Plug-In and discrete wiring
- ISO 5599/1 and /2
- ISO 15407-1 and -2
- Partly direct solenoid operated
- Flows from 130 to 5,300 l/min (ANR)
- Connections: M5 to G3/4"



Line-mounted valves

- Steel spool for maximum service life
- Flows from 300 to 3,500 l/min (ANR)
- Connections: M5 to G1/2"
- Quick-acting valve with on/off response times of 6 / 6ms
- Namur interface

G3



G3 fieldbus electronics

- Graphic display on every module
- Max. 1,200 I/O
- Up to 16 backplane extension modules / 512 valve solenoids per fieldbus node
- Speedcon M12 connector with metal thread
- Module replacement without dismantling manifold
- Interfaces to valve series ISO 15407/2, ISO5599/2, 2002, 2005, 2012 and 2035

Cylinders



- Micro-cylinders
- Short-stroke cylinders
- Compact cylinders
- Stopper cylinders
- Round cylinders

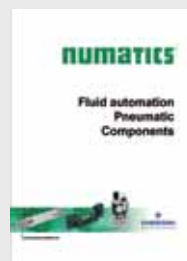


- Cylinders according to ISO
- Cylinders with tie rods
- Rodless cylinders
- Rodless cylinders with magnetic coupling
- Rotatable cylinders
- Cylinders with rod lock

Air Service Equipment and Accessories



- Filters
- Regulators
- Lubricators
- Filter/regulator + lubricator systems
- Stainless steel filter/regulator + lubricator systems
- Lockout valves
- Soft-start series

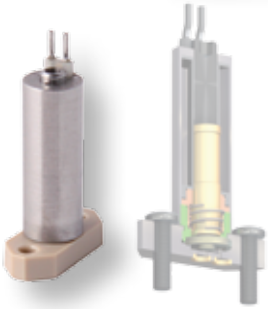


For more information please see our catalogue

Pneumatic components for industrial automation
and visit our website at:
asconumatics.eu

Analytical and Medical Technology

Fluid isolation valves, non-isolation valves and proportional valves



Diaphragm valves

- Gases and liquids
- Low dead volume
- Control of aggressive fluids
- Pressure range: 0 to 2.5 bar
- Connections: M5 to G1/4", cartridge or flange



Rocker valves

- Width: 10 mm
- Gases and liquids
- Particularly suitable for high purity fluids
- Low heat transfer into the fluid
- Pressure range: -0.9 to 3 bar
- Connections: Flange, hose connection 1/4 - 28 UNF, 5/16 - 24 UNF



Flapper valves

- Gases and liquids
- High pressures at large orifice sizes
- Power-save function
Holding power: 2.5 W
- Pressure range: -0.9 to 10 bar
- Connections: G1/8" and flange



Lever valves

- Gases and liquids
- High differential pressures and large flow volumes
- High ambient temperatures
- Pressure range: 0 to 5 bar
- Connections: Smooth spigots 8 - 11 mm O.D.



Bellows valves

- Gases and liquids
- Designed for use under harsh operating conditions
- Suitable for use with extremely corrosive fluids
- Pressure range: 0 to 6 bar
- Connections: G1/4", G3/8"



Pinch valves

- Gases and liquids
- Uninterrupted flow path (zero dead volume)
- Flow in both directions
- Pressure range: 0 to 0.8 bar
- Connections: Tubes 1.65 mm to 9.5 mm O.D.



MICRO 10

- Width: 10 mm
- Neutral gases
- Low power consumption: 1W
- Suitable for mounting on multiple subbase
- Druckbereich: 0 to 10 bar
- Connections: Flange



Flat spring valves

- Gases and liquids
- Extremely short response times
- Very long service life
> 1 billion cycles
- Pressure range: 0 to 7 bar
- Connections: M5 or flange

PIEZOTRONIC



POSIFLOW



SENTRONIC^D



FLOWTRONIC^D



PRECIFLOW / PRECIFLOW IPC



Proportional technology

Continuous control of pressure and flow



For more information, please see our catalogue

Valves for Analytical and Medical Technology

and visit our web site at:

asconumatics.eu

Asco Numatics

Europe

- **BELGIUM**
ASCO Numatics BENELUX (ASCO JOUCOMATIC BENELUX)
Lusambostraat 53, Rue de Lusambo
1190 BRUSSEL / BRUXELLES
Tel.(32) 2 / 333 02 50 - Fax (32) 2 / 333 02 51
E-mail: webmaster.asconumatics.be@emerson.com
- **GERMANY**
ASCO Numatics GmbH
Otto-Hahn-Str. 7-11 - 75248 ÖLBRONN-DÜRRN
Tel.(49) 7237 9960 - Fax (49) 7237 9961
E-mail: webmaster.asconumatics.de@emerson.com
- **FRANCE**
ASCO Numatics (ASCO JOUCOMATIC S.A.)
32, Av. Albert 1er - B.P. 312 - 92506 RUEIL-MALMAISON Cedex
Tel.(33) (0) 1 47 14 32 00 - Fax (33) (0) 1 47 08 53 85
E-mail: webmaster.asconumatics.fr@emerson.com
- **GREAT BRITAIN**
ASCO Numatics Ltd. (ASCO JOUCOMATIC Ltd.)
2 Pit Hey Place, West Pimbo - SKELMERSDALE - Lancashire WN8 9PG
Tel.(44) 1 / 695 71 36 00 - Fax (44) 1 / 695 71 36 33
E-mail: webmaster.asconumatics.uk@emerson.com
- **ITALY**
ASCO Numatics Sirai S.r.l.
Strada per Cernusco, 19 - 20060 BUSSERO (MI)
Tel.(39) 02 / 35 693 1 - Fax (39) 02 / 35 693 300
E-mail: webmaster.asconumatics.it@emerson.com
- **NETHERLANDS**
ASCO Numatics (ASCO CONTROLS BV)
Industrielaan 21 - 3925 BD - SCHERPENZEEL
Tel.(31) 33 277 7911 - Fax (31) 33 277 7888
E-mail: webmaster.asconumatics.nl@emerson.com
- **POLAND**
ASCO Numatics Sp. z o.o. (ASCO JOUCOMATIC Sp. z o.o.)
Ul. Konstruktorska 11a - 02 673 WARSAW
Tel.(48) 22 / 4589 280 - Fax (48) 22 / 4589 288
E-mail: webmaster.asconumatics.pl@emerson.com
- **PORTUGAL**
ASCO Numatics (FLUIDOCONTROL S.A.)
Rua Eng° Ferreira Dias, 938 - AZZ,
4100 - 246 PORTO
Tel.(351) 226 199 870 - Fax (351) 226 176 517
E-mail: webmaster.asconumatics.pt@emerson.com
- **ROMANIA**
ASCO Numatics
Str. Gara Herastrau Nr. 2 - 4 District 2, 5 Floor
020334 BUCHAREST
Tel.(40) 21 206 25 72 - Fax (40) 21 206 25 20
E-mail: alexandru.atanasescu@emerson.com
- **RUSSIA**
ASCO Numatics
10 Building 2 Letnikovskaya St - 115114 MOSCOW
Tel.(7) 49 59 81 98 11 - Fax (7) 49 59 81 98 10
E-mail: alexander.polyakov@emerson.com
- **SWEDEN**
ASCO Numatics (ASCO AB)
Albanoliden 3-5 - 506 30 BORÅS
Tel.(46) 33 / 20 41 70 - Fax (46) 33 / 20 41 79
E-mail: asco@asco.se
- **SWITZERLAND**
ASCO Numatics GmbH (ASCO CONTROLS AG)
Schafftenholzweg 16 - 2557 STUDEN / BIEL-BIENNE
Tel.(41) 32 / 374 45 10 - Fax (41) 32 / 374 45 11
E-mail: info.SWISS@emerson.com
- **SLOVAKIA**
ASCO Numatics (EMERSON A.S.)
Piestanska 1202/44 - 915 28 NOVO MESTO, nad VAHOM
Tel.(421) 32 770 02 05 - Fax (421) 32 770 04 44
E-mail: asco@emerson.sk
- **SPAIN**
ASCO Numatics (FLUIDOCONTROL S.A.)
Poligono Brazomar s/n
39700 CASTRO-URDIALES (Cantabria)
Tel.(34) 942 87 61 00 - Fax (34) 942 86 33 23
E-mail: webmaster.asconumatics.es@emerson.com
- **CZECH REPUBLIC**
ASCO Numatics S.R.O. (ASCO JOUCOMATIC S.R.O.)
Ovci hájek 5 - 158 00 Prague 5 - Nové Butovice
Tel. (420) 2 / 35 090 061 - Fax (420) 2 / 35 090 060
E-mail: asco@ventil.cz
- **TURKEY**
ASCO Numatics (ASCO JOUCOMATIC Turkey)
Emerson building, Icerenkoy Mah. Topcu Ibrahim Sk.
N°: 17 KAT: 6 KÖZYATAGI - ISTANBUL
Tel.(90) 216 / 577 3107 - Fax (90) 216 / 577 0038
E-mail: asconumaticsturkey@emerson.com
- **HUNGARY**
ASCO Numatics (ASCO Kft.)
Bogancs u. 1 - 3 - 1151 BUDAPEST
Tel.(36) 1 / 306 41 00 - Fax (36) 1 / 305 50 78
E-mail: office@ascoucomatic.hu

Americas

- **BRAZIL**
ASCO Numatics (ASCOVAL ind. e. com. Ltda.)
Rod. Pres. Castelo Branco Km 20 - Jardim Sta. Cecilia
CEP 06465-300 barUERI - SAO PAULO
Tel.(55) 11 / 4195 5333 - Fax (55) 11 / 4195 3970
E-mail: ascoval@emerson.com
- **CANADA**
ASCO Numatics (ASCOVALVE Inc)
17, Airport Road - PO Box 160
BRANTFORD, ONTARIO N3T 5M8
Tel.(1) 519 / 758 2700 - Fax (1) 519 / 759 5540
E-mail: ascomail@asco.ca
- **MEXICO**
ASCO Numatics (ASCOMATICA S.A. de C.V.)
Calle 10 #145, 3rd. Floor, Colonia San Pedro de los
Pinos Delegacion Alvaro Obregon
01180 Mexico D.F. Mexico DF CP11700
Tel. (52) 55 5809 5640 - Fax (52) 55 5809 5660
E-mail: ascoventas@emerson.com
- **USA**
ASCO Numatics (ASCOVALVE Inc)
50 Hanover Road - FLORHAM PARK, NJ 07932
Tel.(1) 973 / 966 2000 - Fax (1) 973 / 966 2628
E-mail: info-valve@asco.com
- **SOUTH AFRICA**
ASCO Numatics (ASCOREG)
3, Commerce Place Eastgate EXT 12
P.O. Box 737, Bergvlei 2012 Sandton - GAUTENG
Tel. (27) 11 / 444 22 13 - Fax (27) 11 / 444 22 21
E-mail: ascoreg@mweb.co.za
- **UNITED ARAB EMIRATES**
ASCO Numatics MIDEAST (ASCO JOUCOMATIC MIDEAST)
PO Box 17034 - Jebel Ali free zone - DUBAI
Tel.(971) 4 / 883 44 94 - Fax (971) 4 / 883 44 95
E-mail: ajm@emerson.com

Asia & Oceania

- **CHINA**
ASCO Numatics (ASCO ASIA)
11/F, Innov Tower, 1801 Hong Mei Rd., Xuhui District
SHANGHAI 200233
Tel. (86-21) 3395 0000 / Fax (86-21) 3395 0066
E-mail: shanghai.asco@emerson.com
- **HONG KONG**
ASCO Numatics (ASCO ASIA)
23/F, 625 Kings Road, North point, HONG KONG
Tel.(852) 2343-8580 - Fax (852) 2790-1771
E-mail: hongkong.asco@emerson.com
- **INDIA**
ASCO Numatics (ASCO INDIA Pvt Ltd.)
57 Kundrathur Main Road Gerugambakkam, Porur
602 101 CHENNAI
Tel. (91-44) 2382 1557 - Fax (91-44) 2382 1553
E-mail: ascosales.india@emerson.com
- **JAPAN**
ASCO Numatics (ASCO JAPAN Co. Ltd.)
1-20 Takahata-cho Nishinomiya - HYOGO 663-8202
Tel. (81) 798 67 7255 - Fax (81) 798 63 4462
E-mail: asco.ascojp@emerson.com
- **KOREA**
ASCO Numatics (ASCO ASIA)
12/F, Narae B/D - 719-1
Yeoksam-Dong Gangnam-Gu - SEOUL 135-080
Tel.(82-2) 3483 1570 - Fax (82-2) 3452 0107
E-mail: korea.asco@emerson.com
- **SINGAPORE**
ASCO Numatics (ASCO ASIA)
Blk 4008, Ang Mo Kio Ave.10 - # 04-17/22, Techplace 1
SINGAPORE 569625
Tel.(65) 6556 11 00 - Fax (65) 6556 00 11
E-mail: valvesales@emerson.com
- **TAIWAN R.O.C.**
ASCO Numatics (ASCO ASIA Co. Ltd)
3F, N°128, Lane 235, Pao Chiau Road,
Hsin Tien - TAIPEI (231)
Tel.(886-2) / 8912 1233 - Fax (886-2) / 8912 1883
E-mail: taiwan.asco@emerson.com
- **AUSTRALIA**
ASCO Numatics (ASCOMATION Pty. Ltd.)
Unit 12/25, Frenchs Forest Road East
FRENCHS FOREST - NSW 2086
Tel.(61-2) 9451 7077 - Fax (61-2) 9451 9924
E-mail: sales.ascoa@emerson.com
- **NEW ZEALAND**
ASCO Numatics (ASCOMATION New Zealand Ltd.)
3 Vega Place, Mairangi Bay - AUCKLAND
Tel.(64-9) 478 0192 - Fax (64-9) 478 0193
E-mail: sales.asconz@emerson.com

More information on ASCO Numatics' worldwide distribution network at: www.asconumatics.eu

ASCO Numatics GmbH

Otto-Hahn Str. 7-11
75248 ÖLBRONN-DÜRRN
GERMANY

Phone: (49) 7237 / 996 - 0

Fax: (49) 7237 / 996 - 1

www.asconumatics.de • E-Mail: asconumatics-de@emerson.com